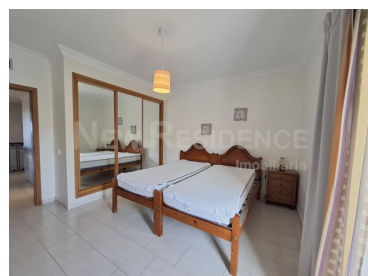




## Albufeira e Olhos de Água - Apartment



Bedrooms



Bathrooms



Area (m<sup>2</sup>)



Land Area (m<sup>2</sup>)

**1 600 € / Month**

(EUR €)

## ALBUFEIRA - 2 Bedrooms - PENTHOUSE - YEAR RENTALS

2 bedroom penthouse with Fabulous Sea View – Praia da Oura

Exclusive 2 bedroom apartment for rent on the top floor of a building with elevator, just 300m from Praia da Oura, in Albufeira. This apartment offers stunning sea views and a prime location close to the center and all essential services.

Property features:

2 spacious bedrooms

2 bathrooms

Large living room with plenty of natural light

Functional kitchen



**CARLA BENTO**

Real Estate Consultant

+351 967 015 042 <sup>1</sup> · +351 289 548 219 <sup>1</sup>

carlabento.newresidence@hotmail.com

T +351 289 548 219 <sup>1</sup> · T +351 967 015 042 <sup>2</sup> ·

Edifício Oura Casa Branca Lote 6 Loja 10 - Estrada de Santa Eulália - 8200-269 Albufeira  
AMI 5961

<sup>1</sup> (Call to national fixed network) | <sup>2</sup> (Call to national mobile network)



Little furniture, ideal to customize to your liking  
Additional Details:

Annual lease agreement

Monthly rent: 1.600€

Security deposit: 2 rents ( 3.200€)

Water, electricity and gas expenses not included

Don't miss this opportunity to live close to the sea, with all the comfort and convenience. For more information or to schedule a visit, please contact us!

## Property Features

- Heating
- Dishwashing machine
- Fitted wardrobes
- Garden
- Private condominium
- Double glazing
- Energetic certification: D
- Washing machine
- Air conditioning
- Thermoaccumulator
- Proximity: Beach, Shopping, Restaurants, Pharmacy, Public Transport
- Views: Sea views, Beach view, Urbanization view
- Walking distance to beach
- Balcony



**CARLA BENTO**

Real Estate Consultant

+351 967 015 042 <sup>2</sup> · +351 289 548 219 <sup>1</sup>

carlabento.newresidence@hotmail.com

T +351 289 548 219 <sup>1</sup> · T +351 967 015 042 <sup>2</sup> ·

**Edifício Oura Casa Branca Lote 6 Loja 10 - Estrada de Santa Eulália - 8200-269 Albufeira**  
**AMI 5961**

<sup>1</sup> (Call to national fixed network) | <sup>2</sup> (Call to national mobile network)