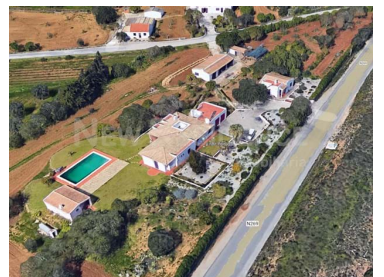




Guia - Farmhouse



 **8**  **8**  **39013**  **39013**  **1 080 000 €**
Bedrooms Bathrooms Area (m²) Land Area (m²) Swimming Pool (EUR €)

4 km from Albufeira, Rural Farm with 3 Villas

Discover the Charm of the Countryside in this Magnificent Farm in Guia

If you're looking for tranquility, space, and an authentic connection to nature, this stunning farmhouse in the picturesque parish of Guia is the perfect choice. With a total area of 39,013 m², this property offers a true rural refuge, while remaining just minutes from the magnificent beaches of the Albufeira coast (10 minutes) and Algarve Shopping (5 minutes).

A Unique Opportunity

The property has an elegant main house with 337 m² of gross private area (ABP), distributed on a single floor. The charming interior courtyard invites contemplation and conviviality, complementing a spacious living room, dining room and a fully equipped kitchen. The master suite with a double



CARLA BENTO

Real Estate Consultant

+351 967 015 042 ² · +351 289 548 219 ¹

carlabento.newresidence@hotmail.com

T +351 289 548 219 ¹ · T +351 967 015 042 ² ·

Edifício Oura Casa Branca Lote 6 Loja 10 - Estrada de Santa Eulália - 8200-269 Albufeira
AMI 5961

¹ (Call to national fixed network) | ² (Call to national mobile network)



bedroom, two additional bedrooms and an office ensure comfort and functionality for the whole family. All homes need restoration, offering an excellent opportunity to customize to your liking.

Detached Second Homes

In addition to the main house, this farmhouse includes two independent second homes, each with 76.5 m² of ABP. Both have a kitchen, living and dining room, two double bedrooms and a bathroom, making them ideal for accommodating guests or for tourist rentals. These houses also need recovery works.

Leisure and Agricultural Potential

The outdoor spaces were designed to provide unforgettable moments. The property has:

Private pool, perfect for relaxing days in the sun;

Outdoor dining area, ideal for enjoying the gastronomic delights of the region;

Annex next to the pool, practical to support meals and gatherings;

Agricultural warehouse and chicken coops, enabling various cultivation and animal husbandry activities;

Orchards and horticultural areas, expanding the agricultural potential of the property.

Potential for Rural Tourism

Thanks to its size and infrastructure, this farm is an excellent option for a rural tourism project. The possibility of expansion, with the construction of additional accommodation units, can be framed in the modalities of Agro-Tourism or Rural Hotel, making this property a promising investment.

Grab this opportunity!

This farmhouse combines the best of country living with proximity to all the amenities and attractions of the Algarve. Don't miss the opportunity to explore your full potential. Schedule your visit now and start turning this dream into reality!



CARLA BENTO

Real Estate Consultant

+351 967 015 042 ² · +351 289 548 219 ¹

carlabento.newresidence@hotmail.com

T +351 289 548 219 ¹ · T +351 967 015 042 ² ·

**Edifício Oura Casa Branca Lote 6 Loja 10 - Estrada de Santa Eulália - 8200-269 Albufeira
AMI 5961**

¹ (Call to national fixed network) | ² (Call to national mobile network)



Property Features

- Condominium value: -----
- Pool
- Drive way
- Energetic certification: D
- Parqueamento exterior
- IMI Value: 600€ ano
- Proximity: Open field, Public Transport
- Sealed land area
- Solar orientation: North, South, East, West



CARLA BENTO

Real Estate Consultant

+351 967 015 042 ² · +351 289 548 219 ¹

carlabento.newresidence@hotmail.com

T +351 289 548 219 ¹ · T +351 967 015 042 ² ·

Edifício Oura Casa Branca Lote 6 Loja 10 - Estrada de Santa Eulália - 8200-269 Albufeira
AMI 5961

¹ (Call to national fixed network) | ² (Call to national mobile network)